

State Fragility Index and Matrix 2010

Monty G. Marshall and Benjamin R. Cole
Center for Systemic Peace

	Fragility Index	Effectiveness Score	Legitimacy Score	Security Effectiveness	Security Legitimacy	Armed Conflict Indicator	Political Effectiveness	Political Legitimacy	Regime Type	Economic Effectiveness	Economic Legitimacy	Net Oil Production or Consumption	Social Effectiveness	Social Legitimacy	Regional Effects
Somalia	25	13	12	■	■	War	■	■	—	■	■		■	■	Mus
Sudan	24	12	12	■	■	War	■	■	aut	■	■	3	■	■	Mus
Dem. Rep. of Congo	23	12	11	■	■	War	■	■	dem	■	■		■	■	Afr
Afghanistan	22	12	10	■	■	War	■	■	—	■	■		■	■	Mus
Chad	22	12	10	■	■	War	■	■	aut	■	■	4	■	■	Mus
Myanmar (Burma)	22	11	11	■	■	War	■	■	AUT	■	■		■	■	
Ethiopia	21	11	10	■	■	War	■	■	dem	■	■		■	■	Afr
Cote d'Ivoire	20	10	10	■	■	X	■	■	dem	■	■		■	■	Mus
Sierra Leone	19	11	8	■	■	*	■	■	DEM	■	■		■	■	Afr
Burundi	18	12	6	■	■	*	■	■	DEM	■	■		■	■	Afr
Central African Rep.	18	10	8	■	■	War	■	■	aut	■	■		■	■	Afr
Guinea	18	9	9	■	■	*	■	■	dem	■	■		■	■	Mus
Haiti	18	10	8	■	■	X	■	■	—	■	■		■	■	
Liberia	18	11	7	■	■	*	■	■	DEM	■	■		■	■	Afr
Niger	18	10	8	■	■	*	■	■	DEM	■	■		■	■	Mus
Burkina Faso	17	10	7	■	■		■	■	aut	■	■		■	■	Afr
Guinea-Bissau	17	10	7	■	■	*	■	■	DEM	■	■		■	■	Afr
Iraq	17	9	8	■	■	War	■	■	dem	■	■	19	■	■	Mus
Nigeria	17	8	9	■	■	War	■	■	dem	■	■	5	■	■	Afr
Rwanda	17	10	7	■	■	*	■	■	aut	■	■		■	■	Afr
Uganda	17	10	7	■	■	X	■	■	aut	■	■		■	■	Afr
Zimbabwe	17	10	7	■	■	*	■	■	dem	■	■		■	■	Afr
Angola	16	7	9	■	■	*	■	■	aut	■	■	37	■	■	Afr
Cameroon	16	7	9	■	■		■	■	aut	■	■		■	■	Afr
Congo-Brazzaville	16	7	9	■	■	*	■	■	aut	■	■	28	■	■	Afr

	Fragility Index	Effectiveness Score	Legitimacy Score	Security Effectiveness	Security Legitimacy	Armed Conflict Indicator	Political Effectiveness	Political Legitimacy	Regime Type	Economic Effectiveness	Economic Legitimacy	Net Oil Production or Consumption	Social Effectiveness	Social Legitimacy	Regional Effects
Malawi	16	8	8	■	■		■	■	DEM	■	■		■	■	Afr
Mauritania	16	8	8	■	■	*	■	■	aut	■	■		■	■	Mus
Yemen	16	7	9	■	■	War	■	■	aut	■	■	2	■	■	Mus
Algeria	15	6	9	■	■	*	■	■	aut	■	■	18	■	■	Mus
Gambia	15	10	5	■	■		■	■	aut	■	■		■	■	Mus
Nepal	15	9	6	■	■	X	■	■	DEM	■	■		■	■	
Pakistan	15	8	7	■	■	War	■	■	DEM	■	■		■	■	Mus
Zambia	15	8	7	■	■		■	■	DEM	■	■		■	■	Afr
Ghana	14	8	6	■	■	*	■	■	DEM	■	■		■	■	Afr
Kyrgyzstan	14	10	4	■	■	X	■	■	DEM	■	■	+	■	■	Mus
Madagascar	14	9	5	■	■		■	■	aut	■	■		■	■	Afr
Mali	14	8	6	■	■	*	■	■	DEM	■	■		■	■	Mus
Mozambique	14	7	7	■	■	*	■	■	dem	■	■		■	■	Afr
Comoros	13	8	5	■	■		■	■	DEM	■	■		■	■	Mus
Djibouti	13	6	7	■	■	*	■	■	dem	■	■	+	■	■	Mus
Egypt	13	5	8	■	■	X	■	■	aut	■	■		■	■	Mus
India	13	8	5	■	■	War	■	■	DEM	■	■		■	■	
Laos	13	6	7	■	■	*	■	■	AUT	■	■		■	■	
Sri Lanka	13	7	6	■	■	X	■	■	dem	■	■	+	■	■	
Timor Leste	13	8	5	■	■	*	■	■	DEM	■	■	28	■	■	
Togo	13	7	6	■	■		■	■	aut	■	■	+	■	■	Afr
Uzbekistan	13	5	8	■	■		■	■	AUT	■	■	+	■	■	Mus
Azerbaijan	12	5	7	■	■	*	■	■	AUT	■	■	38	■	■	Mus
Bangladesh	12	7	5	■	■	*	■	■	dem	■	■		■	■	Mus
Benin	12	6	6	■	■		■	■	DEM	■	■		■	■	Afr
Cambodia	12	8	4	■	■	*	■	■	aut	■	■		■	■	
Colombia	12	4	8	■	■	War	■	■	DEM	■	■	4	■	■	
Ecuador	12	4	8	■	■	*	■	■	dem	■	■	8	■	■	

	Fragility Index	Effectiveness Score	Legitimacy Score	Security Effectiveness	Security Legitimacy	Armed Conflict Indicator	Political Effectiveness	Political Legitimacy	Regime Type	Economic Effectiveness	Economic Legitimacy	Net Oil Production or Consumption	Social Effectiveness	Social Legitimacy	Regional Effects
Eritrea	12	8	4	■	■	*	■	■	AUT	■	■		■	■	Afr
Iran	12	4	8	■	■	*	■	■	AUT	■	■	12	■	■	Mus
Kenya	12	7	5	■	■	X	■	■	DEM	■	■		■	■	Afr
Tajikistan	12	7	5	■	■	*	■	■	aut	■	■	+	■	■	Mus
Tanzania	12	6	6	■	■		■	■	dem	■	■		■	■	Afr
Bhutan	11	5	6	■	■	*	■	■	dem	■	■		■	■	
Bolivia	11	4	7	■	■		■	■	DEM	■	■		■	■	
Equatorial Guinea	11	3	8	■	■		■	■	aut	■	■	169	■	■	Afr
Gabon	11	3	8	■	■		■	■	dem	■	■	51	■	■	Afr
Guyana	11	3	8	■	■		■	■	DEM	■	■	+	■	■	
Lesotho	11	8	3	■	■		■	■	DEM	■	■		■	■	Afr
Nicaragua	11	5	6	■	■	*	■	■	DEM	■	■	+	■	■	
Philippines	11	8	3	■	■	War	■	■	DEM	■	■	+	■	■	
Venezuela	11	3	8	■	■		■	■	aut	■	■	21	■	■	
Guatemala	10	5	5	■	■	*	■	■	DEM	■	■	+	■	■	
Indonesia	10	6	4	■	■	*	■	■	DEM	■	■		■	■	Mus
Kazakhstan	10	4	6	■	■		■	■	AUT	■	■	30	■	■	Mus
Korea, North	10	5	5	■	■		■	■	AUT	■	■		■	■	
Moldova	10	5	5	■	■	*	■	■	DEM	■	■	+	■	■	
Papua New Guinea	10	5	5	■	■	*	■	■	dem	■	■		■	■	
Saudi Arabia	10	2	8	■	■	X	■	■	AUT	■	■	111	■	■	Mus
Syria	10	4	6	■	■	War	■	■	AUT	■	■	2	■	■	Mus
Turkey	10	4	6	■	■	War	■	■	DEM	■	■	+	■	■	Mus
Turkmenistan	10	4	6	■	■		■	■	AUT	■	■	6	■	■	Mus
China	9	4	5	■	■	*	■	■	AUT	■	■	+	■	■	
Honduras	9	4	5	■	■	*	■	■	DEM	■	■	+	■	■	
Senegal	9	5	4	■	■	*	■	■	DEM	■	■	+	■	■	Mus
Solomon Islands	9	6	3	■	■	*	■	■	DEM	■	■	+	■	■	

	Fragility Index	Effectiveness Score	Legitimacy Score	Security Effectiveness	Security Legitimacy	Armed Conflict Indicator	Political Effectiveness	Political Legitimacy	Regime Type	Economic Effectiveness	Economic Legitimacy	Net Oil Production or Consumption	Social Effectiveness	Social Legitimacy	Regional Effects
Georgia	8	5	3	■	■	X	■	■	DEM	■	■		■	■	
Israel	8	2	6	■	■	X	■	■	DEM	■	■	X	■	■	
Mongolia	8	4	4	■	■		■	■	DEM	■	■	+	■	■	
Paraguay	8	4	4	■	■		■	■	DEM	■	■	+	■	■	
South Africa	8	4	4	■	■	*	■	■	DEM	■	■	+	■	■	Afr
Swaziland	8	5	3	■	■		■	■	AUT	■	■	+	■	■	Afr
Tunisia	8	4	4	■	■		■	■	—	■	■		■	■	Mus
Vietnam	8	5	3	■	■	*	■	■	AUT	■	■		■	■	
Cuba	7	2	5	■	■		■	■	AUT	■	■	+	■	■	
Fiji	7	5	2	■	■		■	■	aut	■	■	+	■	■	
Kosovo	7	4	3	■	■	*	■	■	DEM	■	■	na	■	■	Mus
Libya	7	1	6	■	■	War	■	■	—	■	■	84	■	■	Mus
Peru	7	2	5	■	■	*	■	■	DEM	■	■		■	■	
Russia	7	3	4	■	■	War	■	■	dem	■	■	19	■	■	
Thailand	7	4	3	■	■	War	■	■	dem	■	■	+	■	■	
Armenia	6	4	2	■	■	*	■	■	dem	■	■	+	■	■	
Brazil	6	2	4	■	■		■	■	DEM	■	■		■	■	
Cape Verde	6	4	2	■	■		■	■	DEM	■	■	+	■	■	Afr
Dominican Republic	6	2	4	■	■		■	■	DEM	■	■	+	■	■	
Jordan	6	3	3	■	■		■	■	aut	■	■	+	■	■	Mus
Lebanon	6	2	4	■	■	X	■	■	DEM	■	■	+	■	■	Mus
Morocco	6	4	2	■	■	*	■	■	AUT	■	■	+	■	■	Mus
Namibia	6	2	4	■	■	*	■	■	DEM	■	■	+	■	■	Afr
Qatar	6	2	4	■	■		■	■	AUT	■	■	308	■	■	Mus
Serbia	6	4	2	■	■	*	■	■	DEM	■	■	+	■	■	
Ukraine	6	3	3	■	■		■	■	DEM	■	■	+	■	■	
Bosnia	5	3	2	■	■	*	■	■	—	■	■	+	■	■	Mus
El Salvador	5	2	3	■	■	*	■	■	DEM	■	■	+	■	■	

	Fragility Index	Effectiveness Score	Legitimacy Score	Security Effectiveness	Security Legitimacy	Armed Conflict Indicator	Political Effectiveness	Political Legitimacy	Regime Type	Economic Effectiveness	Economic Legitimacy	Net Oil Production or Consumption	Social Effectiveness	Social Legitimacy	Regional Effects
Macedonia	5	3	2	■	■		■	■	DEM	■	■	+	■	■	
Malaysia	5	1	4	■	■		■	■	DEM	■	■	1	■	■	Mus
Oman	5	2	3	■	■		■	■	AUT	■	■	91	■	■	Mus
Albania	4	3	1	■	■	*	■	■	DEM	■	■	+	■	■	Mus
Bahrain	4	0	4	■	■		■	■	AUT	■	■		■	■	Mus
Belarus	4	3	1	■	■		■	■	AUT	■	■	+	■	■	
Jamaica	4	2	2	■	■		■	■	DEM	■	■	+	■	■	
Mexico	4	1	3	■	■	War	■	■	DEM	■	■	3	■	■	
Panama	4	0	4	■	■	*	■	■	DEM	■	■	X	■	■	
Romania	4	1	3	■	■	*	■	■	DEM	■	■	+	■	■	
Trinidad	4	0	4	■	■		■	■	DEM	■	■	28	■	■	
Botswana	3	2	1	■	■		■	■	DEM	■	■	+	■	■	Afr
Cyprus	3	0	3	■	■		■	■	DEM	■	■	X	■	■	
Kuwait	3	0	3	■	■	*	■	■	AUT	■	■	267	■	■	Mus
Montenegro	3	3	0	■	■		■	■	DEM	■	■	+	■	■	
United Arab Emirates	3	0	3	■	■		■	■	AUT	■	■	176	■	■	Mus
United States	3	2	1	■	■	War	■	■	DEM	■	■	X	■	■	
Australia	2	0	2	■	■		■	■	DEM	■	■	+	■	■	
Belgium	2	0	2	■	■		■	■	DEM	■	■	X	■	■	
Bulgaria	2	1	1	■	■		■	■	DEM	■	■	+	■	■	
Chile	2	0	2	■	■	*	■	■	DEM	■	■	+	■	■	
Croatia	2	0	2	■	■	*	■	■	DEM	■	■	+	■	■	
Norway	2	0	2	■	■		■	■	DEM	■	■	144	■	■	
Singapore	2	0	2	■	■		■	■	dem	■	■	X	■	■	
Argentina	1	0	1	■	■		■	■	DEM	■	■	1	■	■	
Czech Republic	1	0	1	■	■		■	■	DEM	■	■	+	■	■	
France	1	0	1	■	■		■	■	DEM	■	■	+	■	■	
Greece	1	0	1	■	■		■	■	DEM	■	■	X	■	■	

	Fragility Index	Effectiveness Score	Legitimacy Score	Security Effectiveness	Security Legitimacy	Armed Conflict Indicator	Political Effectiveness	Political Legitimacy	Regime Type	Economic Effectiveness	Economic Legitimacy	Net Oil Production or Consumption	Social Effectiveness	Social Legitimacy	Regional Effects
Lithuania	1	1	0	■	■		■	■	DEM	■	■	+	■	■	
Mauritius	1	1	0	■	■		■	■	DEM	■	■	+	■	■	
Slovakia	1	0	1	■	■		■	■	DEM	■	■	+	■	■	
Spain	1	0	1	■	■		■	■	DEM	■	■	X	■	■	
Switzerland	1	0	1	■	■		■	■	DEM	■	■	X	■	■	
Uruguay	1	0	1	■	■		■	■	DEM	■	■	+	■	■	
Austria	0	0	0	■	■		■	■	DEM	■	■	X	■	■	
Canada	0	0	0	■	■		■	■	DEM	■	■	13	■	■	
Costa Rica	0	0	0	■	■		■	■	DEM	■	■	+	■	■	
Denmark	0	0	0	■	■		■	■	DEM	■	■	5	■	■	
Estonia	0	0	0	■	■		■	■	DEM	■	■	+	■	■	
Finland	0	0	0	■	■		■	■	DEM	■	■	X	■	■	
Germany	0	0	0	■	■		■	■	DEM	■	■	X	■	■	
Hungary	0	0	0	■	■		■	■	DEM	■	■	+	■	■	
Ireland	0	0	0	■	■		■	■	DEM	■	■	X	■	■	
Italy	0	0	0	■	■		■	■	DEM	■	■	+	■	■	
Japan	0	0	0	■	■		■	■	DEM	■	■	X	■	■	
Korea, South	0	0	0	■	■		■	■	DEM	■	■	X	■	■	
Latvia	0	0	0	■	■		■	■	DEM	■	■	+	■	■	
Netherlands	0	0	0	■	■		■	■	DEM	■	■	X	■	■	
New Zealand	0	0	0	■	■		■	■	DEM	■	■	+	■	■	
Poland	0	0	0	■	■		■	■	DEM	■	■	+	■	■	
Portugal	0	0	0	■	■		■	■	DEM	■	■	+	■	■	
Slovenia	0	0	0	■	■		■	■	DEM	■	■	X	■	■	
Sweden	0	0	0	■	■		■	■	DEM	■	■	X	■	■	
Taiwan	0	0	0	■	■		■	■	DEM	■	■	X	■	■	
United Kingdom	0	0	0	■	■	*	■	■	DEM	■	■	+	■	■	

State Fragility Index 2010

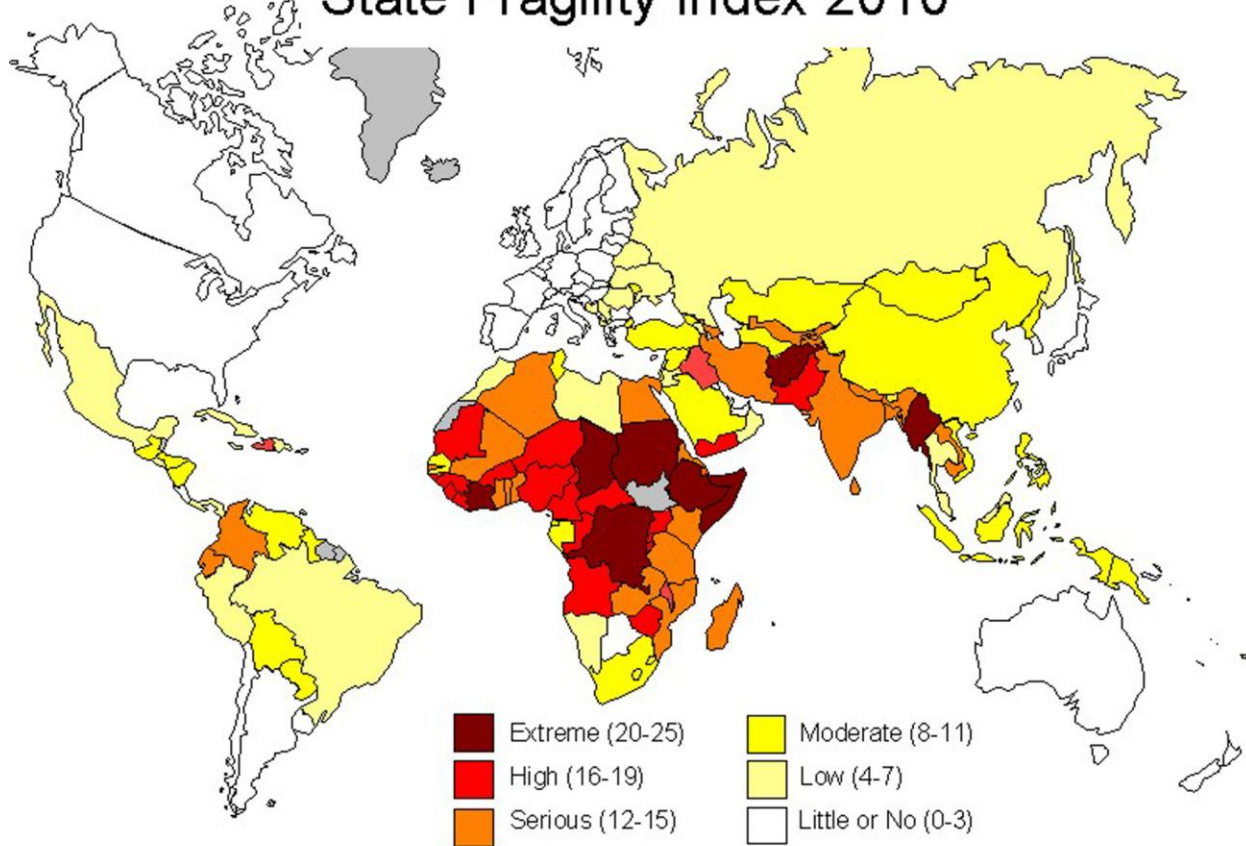


Figure 1. State Fragility in the Global System

TECHNICAL NOTES TO THE STATE FRAGILITY INDEX AND MATRIX 2010:

The State Fragility Index and Matrix 2010 lists all independent countries in the world in which the total country population is greater than 500,000 in 2010 (164 countries). The Fragility Matrix scores each country on both Effectiveness and Legitimacy in four performance dimensions: Security, Political, Economic, and Social, at the end of the year 2010. Each of the Matrix indicators is rated on a four-point fragility scale: 0 "no fragility," 1 "low fragility," 2 "medium fragility," and 3 "high fragility" with the exception of the Economic Effectiveness indicator, which is rated on a five-point fragility scale (including 4 "extreme fragility"). The State Fragility Index, then, combines scores on the eight indicators and ranges from 0 "no fragility" to 25 "extreme fragility." A country's fragility is closely associated with its *state capacity* to manage conflict; make and implement public policy; and deliver essential services and its *systemic resilience* in maintaining system coherence, cohesion, and quality of life; responding effectively to challenges and crises, and continuing progressive development.

Fragility Indices

State Fragility Index = Effectiveness Score + Legitimacy Score (25 points possible)

Effectiveness Score = Security Effectiveness + Political Effectiveness + Economic Effectiveness + Social Effectiveness (13 points possible)

Legitimacy Score = Security Legitimacy + Political Legitimacy + Economic Legitimacy + Social Legitimacy (12 points possible)

The first column, following the country name, lists that country's State Fragility Index for the most current year (using year 2010 data whenever available). The composite index is followed by its two component scores: Effectiveness and Legitimacy.

General Notes: The State Fragility Index and Matrix was originally introduced in "Global Report on Conflict, Governance, and State Fragility 2007." In order to standardize procedures for scoring each of the eight component indicators in order to make the indicators and indices comparable across time, we set threshold values for the categorical fragility scores based on cut-points derived from values in a baseline year (2004). This methodology effects continuous measures used for Economic Effectiveness (GDP per capita in constant 2000 US dollars); Economic Legitimacy (manufacturing exports as a percent of merchandise exports); Social Effectiveness (human development indicator; HDI); and Social Legitimacy (infant mortality rate); baseline specifications are provided in the relevant indicator explanations that follow. Social Effectiveness scores were revised slightly due to a change in the formulation of the Human Development Index by the UNDP *Human Development Report* in 2010. The Economic Effectiveness indicator was rescaled in 2009 and a fifth value was added to denote "extreme fragility" in countries that have a GDP per capita of \$400 or less (constant 2000 US\$). In addition, a fourth indicator was added in 2008 to the calculation of the Political Legitimacy Score (scores for all previous years have been recalculated; state fragility scores have been calculated for all countries annually beginning with 1995). As several of the Matrix indicators use "most recent year available" data, the Matrix scores are carried forward and adjusted when new data becomes available; see details below. Trends graphs (figures 2-4 below) include only the 161 countries that have existed since 1995 (Kosovo, Montenegro, and Timor Leste are not included in the trends/comparisons; South Sudan gained independence in 2011).

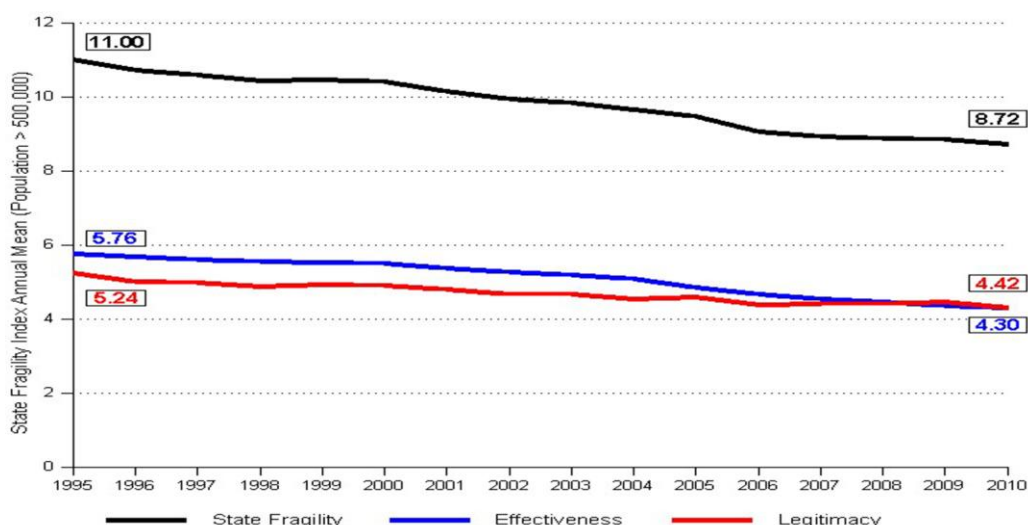


Figure 2. Global Trends in State Fragility, 1995-2010

Security Indicators

Security Effectiveness ("seceff") Score: Total Residual War, a measure of general security and vulnerability to political violence, 1986-2010 (25 years). Source: Monty G. Marshall, Major Episodes of Political Violence, 1946-2010, (www.systemicpeace.org), variable name "acttotal." The formula to calculate this score is based on two assumptions: (1) the residual effects of low level and/or short wars diminish relatively quickly; and (2) the residual effects of serious or protracted wars diminish gradually over a 25-year period. Three indicators are used to calculate each country's "residual war" score (*reswartot*): *warsum1-4* (sum of annual scores for all wars in which the country is directly involved for each continuous period of armed conflict); *yrnowar1-3* (interim years of "no war" between periods of armed conflict); and *yrpeace* (years of peace, or no war, since the end of most recent war period). For states with one war episode: $reswartot = warsum - [yrpeace + (0.04yrpeace \times warsum)]$. For countries with multiple periods of war, a *reswar* value is calculated for each, in chronological order. Thus, for a state with two episodes of war, to calculate the first episode: $reswar1 = warsum1 - [yrnowar1 + (0.04yrnowar1 \times warsum1)]$; and for the second episode: $reswartot = (reswar1 + warsum2) - \{yrpeace + [0.04yrpeace \times (reswar1 + warsum1)]\}$; and so on. Any negative residual war (*reswar*) scores are converted to zero before calculating additional residual war scores. The final *reswartot* value is then converted to a four-point fragility scale, where: 0 = 0; 1 = 0.1-15; 2 = 15.1-100; and 3 = greater than 100.

Security Legitimacy ("secleg") Score: State Repression, a measure of state repression, 1995-2009. Source: Mark Gibney, Linda Cornett, and Reed Wood, Political Terror Scale (PTS; www.politicalterror scale.org). The PTS provides separate annual indicators drawn from U.S. State Department and Amnesty International reports; each indicator is coded on a five-point scale, from 1: "no repression" to 5: "systemic, collective repression." To determine the state

repression score, we calculate the following: (1) nine-year average, 1996-2004; (2) four-year average, 2005-2008; and (3) most recent value, 2009; the three, mean indicators are then compared according to a fragility categorization: 0 = 1.0-2.0; 1 = 2.1-3.0; 2 = 3.1-4.0; and 3 = greater than 4.0. If the most recent year value agrees with the previous four-year average, then these two means are used to identify the repression category. When the most recent year score is not in agreement with the previous period, then the earlier nine-year mean is used to help determine a more general pattern in state repression. Historical treatments, that is, calculations of Security Legitimacy Scores for previous years, are further aided by reference to patterns in "future" PTS values. The exact year of change in the general practice of state repression and, so, the Security Legitimacy Score can be more confidently identified in the historical treatment. Because the calculated value on this indicator is based on year 2009 data, the indicator value is assigned to the 2009 Matrix "secleg" score and that score is carried forward to the 2010 Matrix.

Referent Indicator: The *Armed Conflict Indicator* provides a general indicator of the country's most recent experience with major armed conflict, including wars of independence, communal wars, ethnic wars, revolutionary wars, and inter-state wars. Referent indicators are not used in the calculation of state fragility scores. Source: Major Episodes of Political Violence, 1946-2010, Center for Systemic Peace. A dark shaded "War" entry indicates a country is actively involved in a major armed conflict(s) in mid-2011; a medium shaded "X" indicates that the country has emerged from major armed conflict(s) in the past five years (since mid-2006); and a light shaded "*" indicates that the country has been directly involved in one or more major armed conflicts sometime during the previous twenty year period (1986-2005) but has not experienced a major armed conflict since, that is, for at least the past five years.

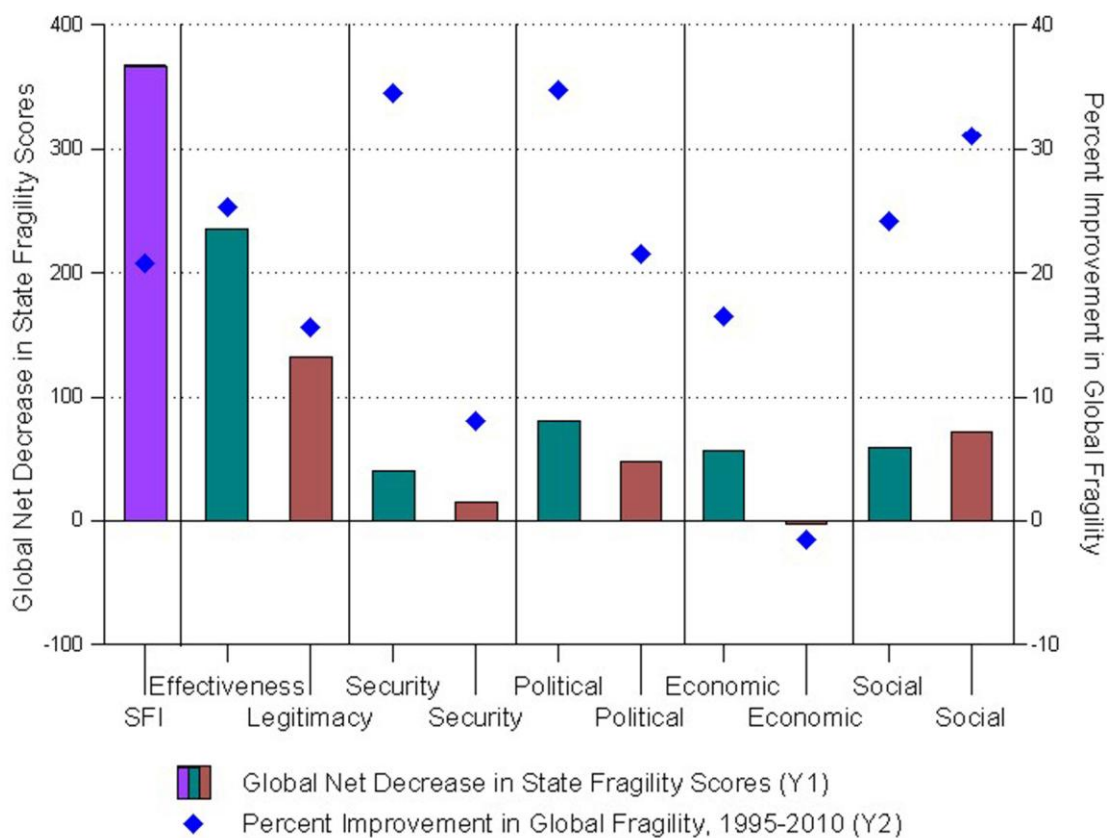


Figure 3. Global Net Changes in State Fragility, 1995-2010

Political Indicators

Political Effectiveness ("poleff") Score: Regime/Governance Stability, 1995-2010. Sources: Monty G. Marshall, Keith Jagers, and Ted Robert Gurr, Polity IV Project: Political Regime Characteristics and Transitions, 1800-2010; Henry S. Bienen and Nicolas van de Walle, Leadership Duration (updated by Monty G. Marshall); and Monty G.

Marshall and Donna Ramsey Marshall, *Coups d'Etat, 1946-2010*, datasets (www.systemicpeace.org). Three indicators are used to calculate the Regime/Governance Stability score: Regime Durability (Polity IV, 2010); Current Leader's Year's in Office (Leadership Duration, 2010); and Total Number of Coup Events 1995-2010, including successful, attempted, plotted, alleged coups and forced resignations or assassinations of chief executives, but not including coup events associated with Polity adverse regime changes (these major regime changes cause the "durability" score to be reset to "0" and, so, would be double-counted, see above). These indicators are scored such that: Durability < 10 years = 1; Leader Years in Office > 12 years = 1; and Total Coup Events: 1-2 = 1 and >2 = 2. These indicators are then added to produce the Regime/Governance Stability score (scores of 4 are recoded as 3). Note: Countries coded in the Polity IV dataset as an "interregnum" (i.e., total or near total collapse of central authority, -77) for the current year are scored 3 on the Political Effectiveness indicator.

Political Legitimacy ("polleg") Score: Regime/Governance Inclusion, 2010. Sources: Polity IV, 2010; Ted Robert Gurr, Monty G. Marshall, and Victor Asal, *Minorities at Risk Discrimination 2010* (updated by Monty G. Marshall); and Ted Robert Gurr and Barbara Harff, *Elite Leadership Characteristics 2010* (updated by Monty G. Marshall). In the 2007 report, four indicators were used to determine the Regime/Governance Inclusion score: Factionalism (Polity IV, *parcomp* value 3 = 1); Ethnic Group Political Discrimination against 5% or more of the population (Discrimination: *POLDIS* values 2, 3, 4 = 1); Political Salience of Elite Ethnicity (Elite Leadership Characteristics: *ELETH* values 1 or 2 = 1); and Polity Fragmentation (Polity IV, *fragment* value greater than 0 = 1). To these indicators, we have added Exclusionary Ideology of Ruling Elite (Elite Leadership Characteristics: *ELITI* value 1 = 1). Political Legitimacy Score is calculated by adding these five indicators; scores of 4 or 5 (rare) are recoded as 3.

Referent Indicator: The *Regime Type* column provides a general indicator of the country's regime type in mid-2011 based on the "polity" score recorded in the Polity IV data series. An upper case "AUT" indicates the country is governed by an institutionalized autocratic regime (POLITY -6 to -10); a lower case "aut" indicates that the country is governed by an uninstitutionalized, or "weak," autocratic regime (other EXREC 1 to 5). An upper case "DEM" indicates an institutionalized democracy (POLITY 6 to 10) and a lower case "dem" indicates an uninstitutionalized, or "weak," democratic regime (other EXREC 6 to 8). Countries denoted with a dash "-" indicates that the country has only limited central governance, either because of a regime failure (Libya and Somalia), foreign occupation (Afghanistan and Bosnia), or a transitional government (Ivory Coast). As the Polity IV indicator of "polar factionalism" has proven to be a very potent indicator of political instability, regimes that are denoted as factional (i.e., PARCOMP=3) are shaded; in addition, transitional (POLITY score -88), failed (POLITY score -77), and occupied (POLITY score -66) are also considered unstable and, so, are shaded on this indicator.

Economic Indicators

Economic Effectiveness ("ecoeff") Score: Gross Domestic Product per Capita (constant 2000 US\$), 2003-2009. Source: World Bank, *World Development Indicators, 2010* (www.worldbank.org/data). The annual values for the past seven years are reviewed to verify that the value in the most recent year is consistent with values in previous years and that a threshold/category change in a country's GDP per capita indicator score is part of a consistent trend and not simply a short-term aberration from that trend. The value for the most recent year (2009) is coded into a five-point fragility scale, based on cut-points derived from the threshold values for the fit of the State Fragility Index and GDP per capita in a baseline year (2004). The standardized categories are as follows: 4 = less than or equal to \$400.00; 3 = \$400.01 to \$1000; 2 = \$1000.01 to \$2500.00; 1 = \$2500.01 to \$5000; and 0 = greater than \$5000. When a country's 2009 value exceeds the borderline value separating categories, the fifteen-year income growth indicator is used to assign the final score: selecting the higher fragility category if long-term growth is negative or the lower fragility category if long-term growth is positive. Because the calculated value on this indicator is based on year 2009 data, the indicator value is assigned to the 2009 Matrix "ecoeff" score and that score is carried forward to the 2010 Matrix.

Economic Legitimacy ("ecoleg") Score: Share of Export Trade in Manufactured Goods, 1995-2008. Source: UN Development Programme, *Structure of Trade, 2010*, and World Bank, *World Development Indicators (WDI), 2010*, (manufacturing as a percentage of merchandise exports). Merchandise exports include two classes of products: manufactured goods and primary commodities; low percentage of manufactured goods indicates a high reliance on primary commodities for foreign exchange. The annual values of this variable are examined to ensure that the most recent annual value is a representative value within the established range for that country. The manufacturing percentage of merchandise exports is then converted to a four-point fragility score, where: 3 = less than or equal to 10; 2 = greater than 10 and less than or equal to 25; 1 = greater than 25 and less than or equal to 40; and 0 = greater than 40. Because the calculated value on this indicator is based on year 2008 data, the indicator value is assigned to the 2008 Matrix "ecoleg" score and that score is carried forward to both the 2009 and 2010 Matrix. The world's main illicit drug producing/supplying countries: Afghanistan, Burma (Myanmar), and Columbia are given the highest value (3) on this indicator.

Referent Indicator: The *Net Oil Production or Consumption* indicator provides information on a country's 2010 petroleum energy profile expressed in net "barrels per capita" as reported by the US Energy Information Administration (www.eia.doe.gov). The indicator value is calculated by subtracting the country's reported total

daily consumption figure from its total daily production figure (in thousands of barrels), multiplying the result by 365 (to get an annual figure), and dividing by the country's total population (in thousands). A dark-shaded numerical value (e.g., Qatar's **474**) indicates a net petroleum producer expressed in barrels per capita. A plus sign "+" indicates a moderate net petroleum consuming country (1-10 barrels per capita) and an "X" indicates a major net consuming country (greater than 10 barrels per capita). Blank cells indicate country's with low petroleum profiles (less than one barrel per capita producer or consumer).

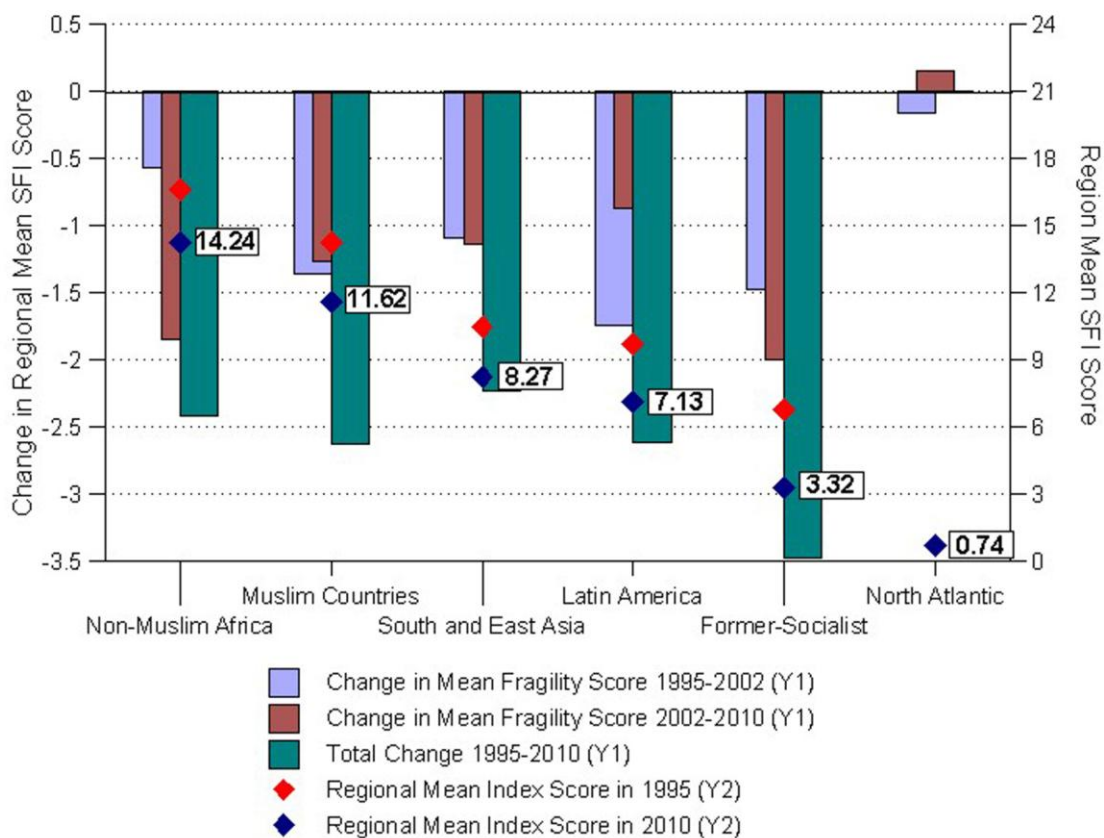


Figure 4. Regional Net Changes in State Fragility, 1995-2010

Social Indicators

Social Effectiveness ("soceff") Score: Human Capital Development, 2010. Source: UNDP *Human Development Report 2010*, Human Development Index (HDI), 2010 (www.undp.org). Reported HDI values are converted according to a four-point fragility scale based on the cut-points of the lower three HDI quintiles in the baseline year, 2004. The Social Effectiveness Score is assigned as follows: 3 = less than or equal to .400; 2 = greater than .400 and less than or equal to .600; 1 = greater than .600 and less than or equal to .700; and 0 = greater than .700. **Note:** These cutpoints differ from those reported in previous editions of *Global Report*. This is due to a change in the formulation of the Human Development Index reported in the UNDP *Human Development Report* beginning in 2010. The new UNDP report provides scores for earlier years and orders countries similarly across the two (old and new) formulations of the HDI; thus the two indices could be combined to provide consistent coverage annually for the entire period, 1995-2010.

Social Legitimacy ("socleg") Score: Human Capital Care, 2010. Source: US Census Bureau, International Data Base, 2011, (IDB; www.census.gov/ipc/www/idb), Infant Mortality Rate, 2010. This indicator is based on the infant mortality rate (number of deaths of infants under one year of age from a cohort of 1,000 live births), with values converted to a four-point fragility scale based on the upper cut-points of the lower three quintiles of the infant mortality rates in the baseline year, 2004. The Social Legitimacy Score is assigned as follows: 3 = greater than 75.00; 2 = less than or equal to 75.00 and greater than 45.00; 1 = less than or equal to 45.00 and greater than

20.00; and 0 = less than or equal to 20.00. These scores are then adjusted according to ranking comparisons between the country's income level (GDP per capita) and human capital development (HDI). If the country's HDI ranking among the 164 countries listed is more than twenty-five places above its GDP per capita ranking (meaning it provides better human capital care than expected by its level of income) the Social Legitimacy Score (fragility) is lowered by one point. If HDI ranking is more than twenty-five places below GDP per capita ranking, the fragility score is increased by one point.

Referent Indicator: The *Regional Effects* indicator provides information to identify two important "neighborhood" clusters of countries: dark-shaded "**Mus**" indicates a country that is characterized by a Muslim majority (countries mainly located in northern Africa, the Middle East, and Central and Southeast Asia) and unshaded "**Afr**" indicates a country located in non-Muslim (sub-Saharan) Africa.

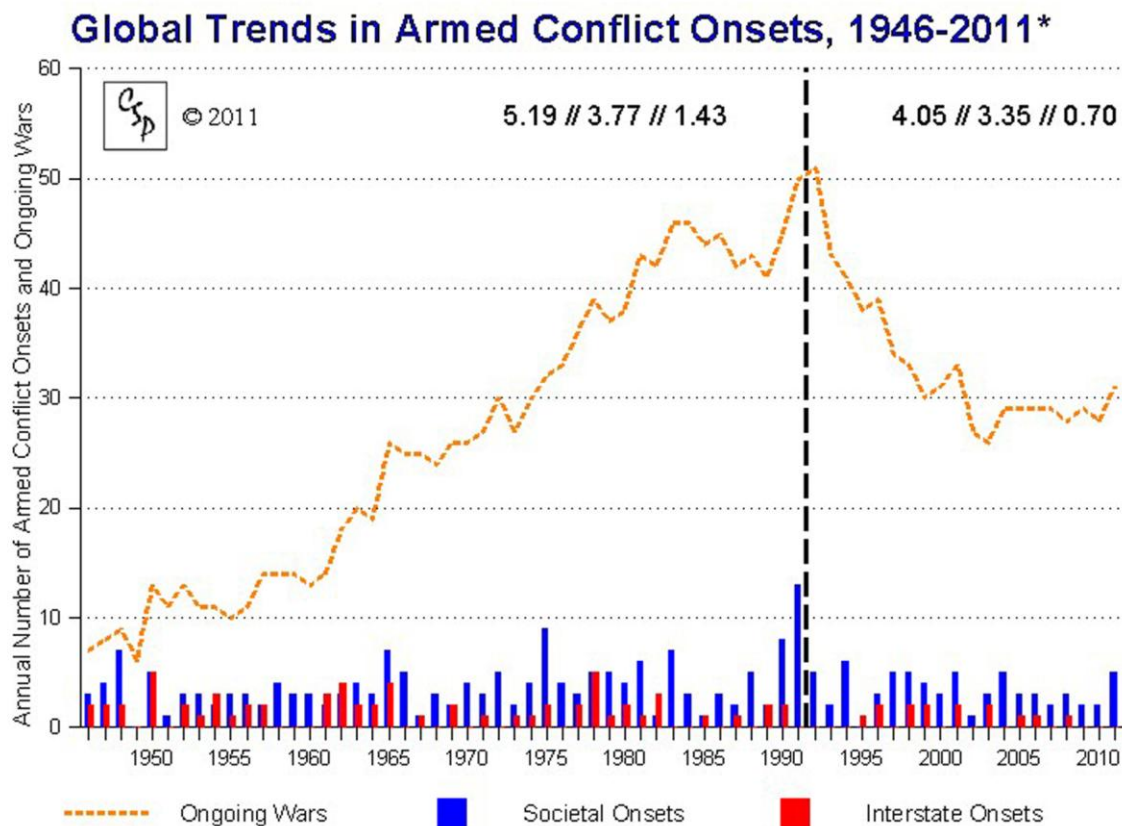


Figure 5. Global Trends in Armed Conflict, 1946-2011*

* Figure 5 shows numbers of armed conflict onsets and ongoing wars for 2011 only through the date of publication of the State Fragility Index and Matrix 2010 in mid-August 2011 as compiled by the Center for Systemic Peace (Major Episodes of Political Violence, aka "warlist"). The numbers on the top part of the graph denote annual means of all armed conflicts // societal wars // and interstate wars for the Cold War (1946-1991) and post-Cold war (1992-2011*) periods.